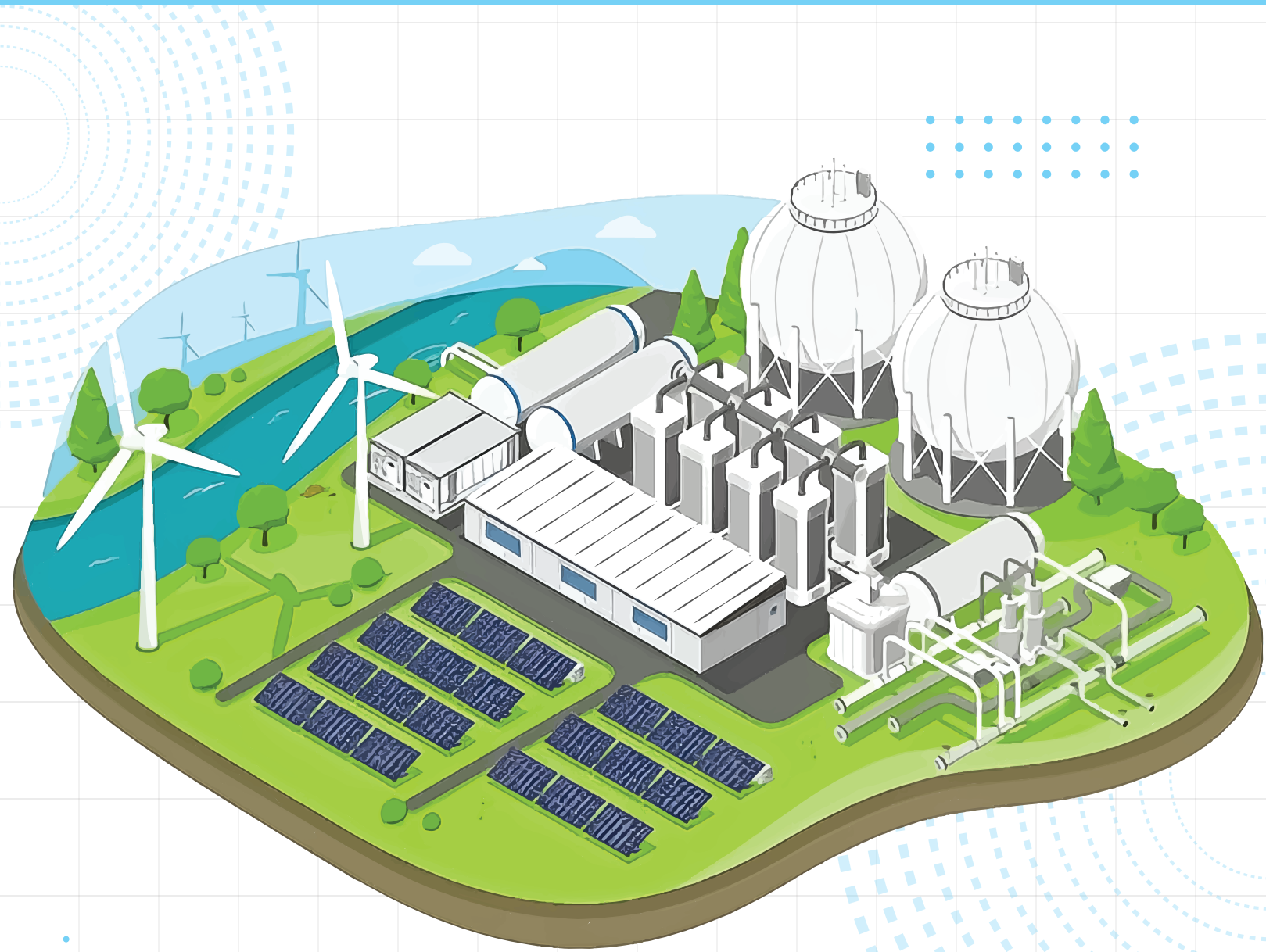


# LPG MOTHER PLANT & SATELLITE PLANT EQUIPMENT SOLUTION



## CONCERNS



- ✔ **Type:** Aboveground or mounded horizontal cylindrical or spherical tanks
- ✔ **Material:** Carbon steel (SA 516 Grade 70) or similar with corrosion protection
- ✔ **Design Code:** BSEN 13445
- ✔ **Capacity:** Typically, between 100 m<sup>3</sup> to 300 m<sup>3</sup> per tank
- ✔ **Operating Pressure:** 17.5 bar (1.75 MPa) to 25 bar (2.5 MPa)
- ✔ **Design Temperature:** -20°C to +55°C
- ✔ **Corrosion Allowance:** 1.5 mm minimum
- ✔ **Safety:** Pressure relief valves, rupture discs, and emergency shutoff valves
- ✔ **Coating:** External epoxy with polyurethane finish for weather protection

## STORAGE TANKS



## LPG CAROUSEL



- ✔ **Type:** Automatic LPG cylinder filling carousel
- ✔ **Capacity:** 300 to 1,200 cylinders per hour (varies based on the number of filling points)
- ✔ **Number of Filling Heads:** Typically, 12 to 36 filling heads
- ✔ **Cylinder Size Compatibility:** Standard LPG cylinders (typically 6 kg, 12 kg, 14.2 kg, 50 kg)
- ✔ **Control System:** Fully automated PLC-based system for process control and safety
- ✔ **Accuracy:** +/- 0.5% weight tolerance

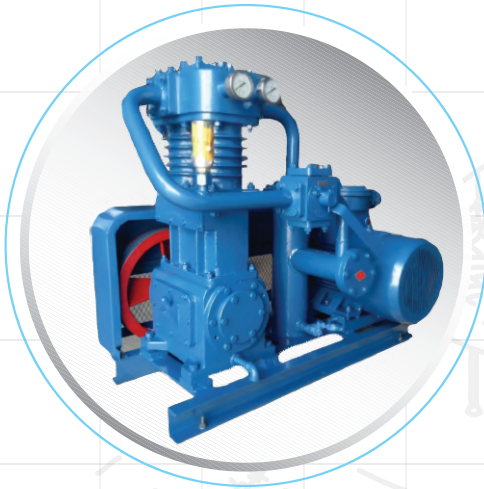
## LPG FILLING MACHINE

- ✔ **Supply Voltage:** AC220, 50HZ
  - ✔ **Working temperature:** -10°C~40°C
  - ✔ **Filling Capacity:** 10KG-50kg
  - ✔ **Level of accuracy:** III
  - ✔ **Minimum weighing:** 3kg
  - ✔ **Maximum weighing:** 15k
  - ✔ **Division value:** 50g
- 7-inch TFT LCD and membrane buttons



## LPG COMPRESSOR

## TRANSFER PUMP



- ✓ **Single-Seal Model:** LB161B
- ✓ **Minimum / Maximum:** 350 / 825 RPM
- ✓ **Reduce maximum speeds by 9% for continuous duty operation**
- ✓ **Displacement:** @min rpm – CFM (m<sup>3</sup> /hr)- 7.16 (12.2)  
@max rpm – CFM (m<sup>3</sup> /hr) - 16.9(28.7)
- ✓ **Max. BHP (Kw):** 7.5 (5.5)
- ✓ **MAWP – psia (kPa):** 350 (2.416)
- ✓ **Maximum Discharge Temperature:** 350°F (176°C)
- ✓ **Rotation Direction:** Bi-Directional

- ✓ **Type:** Sliding Vane
- ✓ **Capacity:** 35 m<sup>3</sup>/h
- ✓ **Head:** 25 bars (Max.)
- ✓ **Working Pressure:** 1.8 MPa
- ✓ **Speed:** 780 RPM
- ✓ **Motor:** 5.5 kw
- ✓ **Working Temperature:** 120°C (Max.)
- ✓ **Flange Connections:** DN-75, PN-40
- ✓ **Temperature Range:** -20 °C to +120 °C

## LPG STORAGE TANK



- ✓ **Capacity:** 50 MT ~ 150 MT
- ✓ **Type:** Underground/Mounded/Above ground
- ✓ **Standard:** BS EN 13445
- ✓ **Design Pressure:** 17 bar
- ✓ **Test Pressure:** 26 bar
- ✓ **Design Temperature:** -20°C to +60°C
- ✓ Approved by Explosive department
- ✓ ISO 9001:2015 Certified
- ✓ Design approved by BUET
- ✓ NDT (Ultrasonic Test) by Bureau Veritas
- ✓ Hydraulic test by Bureau Veritas
- ✓ **Origin:** Bangladesh

# MANUFACTURING FACILITY

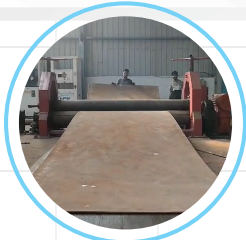


## SPECIALTY

- ✓ Pioneer of LPG equipment supply in Bangladesh.
- ✓ Quick delivery, installation and after sales support.
- ✓ Uninterrupted technical support by skilled manpower.
- ✓ Explosive license for manufacturing of LPG storage tank in Bangladesh.
- ✓ Specialized for project management of Industrial LPG solutions.
- ✓ Successfully installed a lot of Industrial LPG System in all over the country.
- ✓ ISO 9001:2015 certified company for tank manufacturer in Bangladesh.
- ✓ Operation & maintenance support from all divisional/zonal office.
- ✓ Available ready stock of spare parts and machineries.
- ✓ Own LPG Distribution Systems.



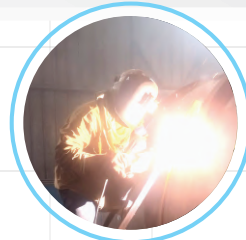
MEETING



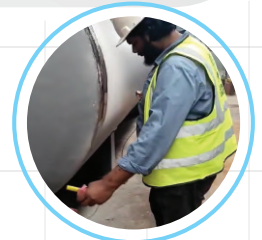
ROLLING WORK



V-NOTCH CUTTING



Welding



UT TESTING

## OUR CONTACT

### Corporate Office

- SMET Services / Saad Motors Ltd  
2/2 Pallabi (5th Floor), Mirpur, Dhaka-1216
- Sale Support: 01765038392, 01704179393
- Customer Support: 01765038391, 01765038398
- After Sale Support: 01765038393, 01765038396  
01765038392
- smetservices@gmail.com
- www.smetservices.com

### Factory Office

- Saad Motors Ltd  
Plot: A-41, Kawnia, Barishal, Bangladesh
- 01704179369, 01704179361
- 01765038392
- smetservices@gmail.com
- www.smetservices.com



www.smetservices.com

### CONCERNS

